

TANDEM plus BLUMOTION





Blum's newest generation of TANDEM plus BLUMOTION concealed drawer runners offers four-dimensional adjustment, elongated holes for depth adjustment, bottom mount holes and exceptional load capacity.

With TANDEM plus BLUMOTION concealed runners, the customer only sees the beauty of the wood drawers while experiencing the quality of motion and soft closing they have come to expect from Blum products.



TANDEM plus BLUMOTION concealed runners are made in the USA at our North Carolina facility. This is just one example of Blum's commitment to manufacturing in the US, for the US.

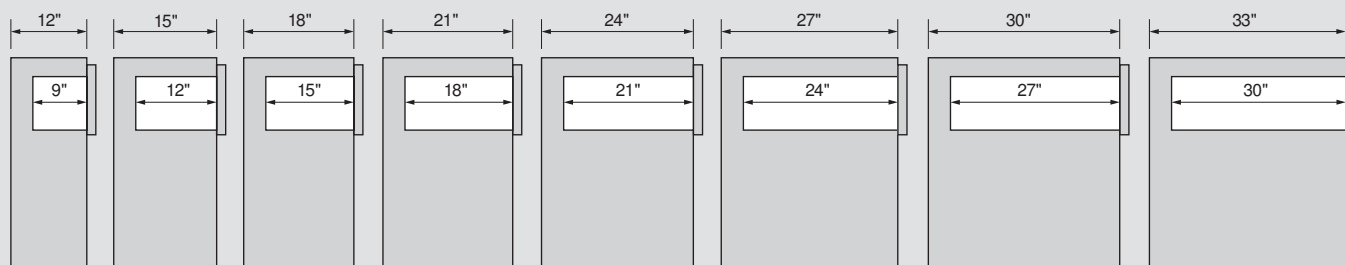
TANDEM plus BLUMOTION is mounted discreetly beneath the drawer and has the quietest opening and soft closing action available. This top-of-the-line concealed runner is the industry choice for dovetail drawers in high-end cabinetry, in either face frame or panel.

TANDEM plus BLUMOTION overview

drawer length	full extension		heavy duty full extension	
	maximum drawer thickness		maximum drawer thickness	
	5/8"	3/4"	5/8"	3/4"
9"	563H series	563F series		
12"				
15"				
18"	563H and 563. series		569H series	569F series
21"				
24"			569. series	569A series
27"				
30"				
capacity static/dynamic	100/90 lb*		150/135 lb*	

* Per ANSI/BHMA 156.9 Grade 1 standards on a 21" length drawer box

Standard lengths



TANDEM series runners are based on the American standard 3" cabinet depth system, therefore runner lengths are in 3" increments. TANDEM plus runners are available for drawers from 9" to 30" in length.



Planning tools

Blum has downloadable Excel® spreadsheets that provide the required parts and calculate the mounting locations for your application. Available at blum.com/planning



ISO 9001

Blum, Inc. is ISO 9001 certified which means that you are assured of consistent quality in every Blum product.



ANSI/BHMA

All Blum runners meet or exceed ANSI/BHMA 156.9 Grade 1 requirements. Contact your local Blum representative for more details.



General information

All Blum hardware undergoes strict quality control procedures through all stages of production. Blum hardware is designed for cabinets and cabinet components made from wood, melamine or MDF. Careful attention must be paid to installation and operating instructions when using Blum hardware (see catalogs and instruction sheets for all technical information). The manufacturer must decide on the screws or attachment methods to suit the material being used (i.e. wood, melamine, etc.). The hardware must not be exposed to acidic or corrosive materials (i.e. some household cleaning solutions). To ensure that Blum hardware functions correctly, it must be kept clean and undamaged. For any additional information please contact your Blum representative. Anyone selling Blum hardware must ensure that their customer is aware of any relevant information given in this catalog.

Conditions of sale and delivery

All deliveries and services are based on the "general conditions of sale" which are available upon request. The technical presentations and dimensions in illustrations are non-binding. We reserve the right to make changes to specifications at any time. We do not accept any responsibility for any errors which may occur in the production of this catalog.

General specifications

Complete runner system

- Full extension concealed runners with BLUMOTION soft close
- Zinc-coated steel
- Concealed roller carriage with permanently lubricated synthetic rollers
- Available in standard and heavy duty
- H and . series for drawers up to 5/8" side material thickness
- F and A series for drawers up to 3/4" side material thickness
- Elongated holes for depth adjustment
- Bottom mount holes on 15", 18" and 21" standard duty
- Tool-free tilt adjustment
- Tool-free rear side-to-side adjustment

Locking devices

- Stamped steel or zinc die-cast base with synthetic, spring-loaded release levers
- Captive right device, self-aligning left device
- Self-adjusting drawer length tolerance
- Tool-free height adjustment
- Tool-free front side-to-side adjustment
- Available with depth adjustment
- Available for narrow drawers

Rear mounting options

- Zinc-coated steel brackets or nylon sockets
- Depth and lateral self-alignment

One runner for all applications

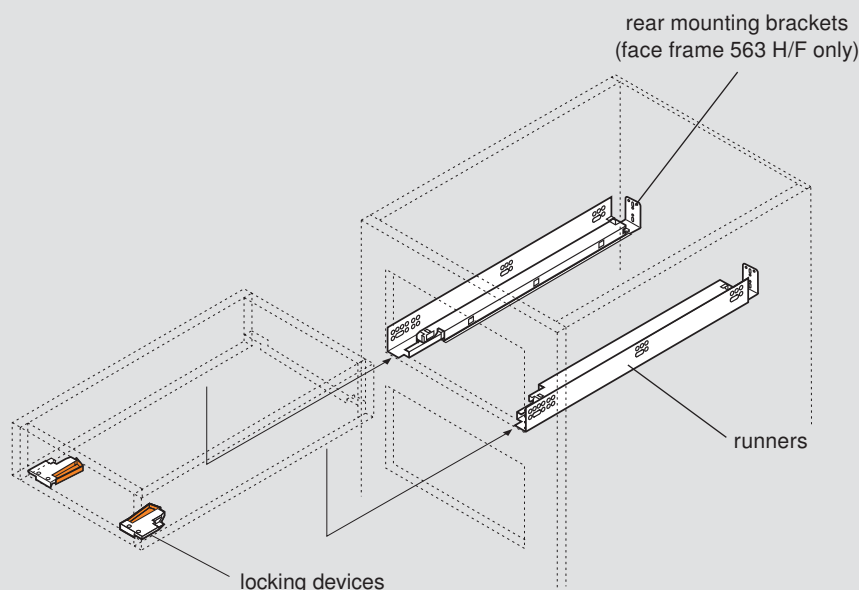
TANDEM runners are designed for the American 3" increment cabinet depth system. This feature permits overlay or inset applications to use the same runner. Full length runners make installation in panel or face frame cabinets possible.

Load capacities

- 100 lb static, 90 lb dynamic for TANDEM plus BLUMOTION 563 series
- 150 lb static, 135 lb dynamic for TANDEM plus BLUMOTION 569 series

Drawer components

NOTE: For 563. and 569 series, rear brackets and sockets cannot be used. Cabinet sides must be blocked-out flush with the inside of the face frame.



NOTE: Rear mounting brackets used for frame applications only

Locking devices

Locking devices allow easy insertion and removal of drawers



page 32

Rear mounting options

For use when installing TANDEM runners in face frame cabinets. Not necessary for panel cabinet installation.



page 34

Accessories



page 42

TANDEM template

A required assembly aid for the boring of TANDEM locking devices and rear hooks

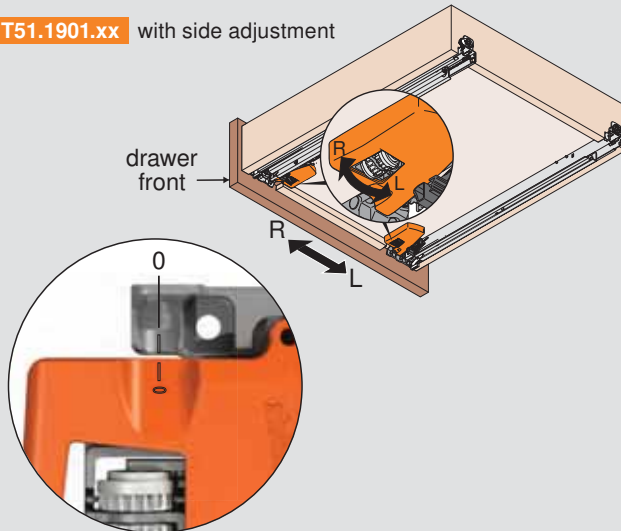


page 44

New side adjustment

- 1** Rotate side adjustment left or right equally on both locking devices. Drawer front moves in the same direction as rotation.

T51.1901.xx with side adjustment

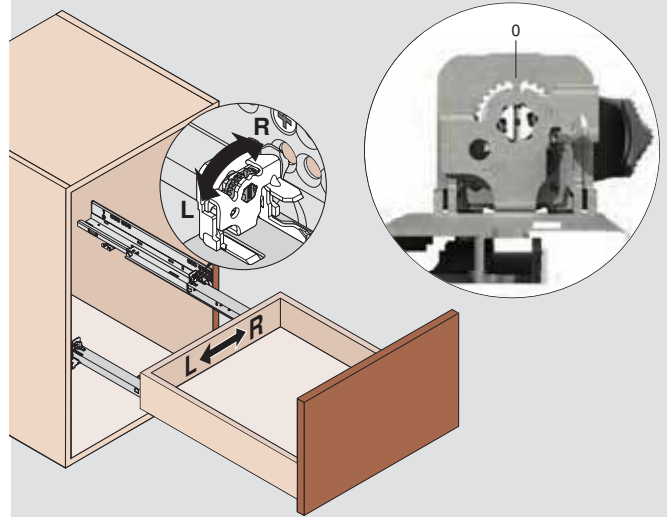


Maximum 1.5 (1/16") to left or right (tool-free)

NOTE: Side adjustment not available on T51.x8xx locking devices

New rear side adjustment

- 2** After front side adjustment is made with the locking devices, rotate the rear side adjustment left or right to re-align the back of the drawer box with the front. Drawer back moves in the same direction as rotation.



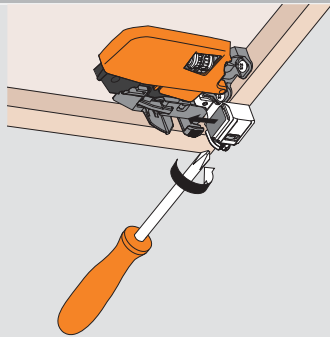
Maximum 1.5 (1/16") to left or right (tool-free)

New depth adjustable locking device

Locking device

T51.1901.PS
with side, height and depth
adjustment

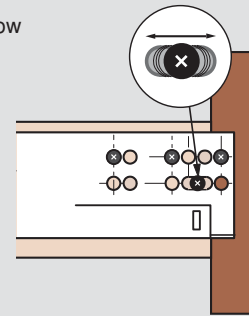
Turning the adjustment screw
allows for up to 2.5 (3/32") out
adjustment



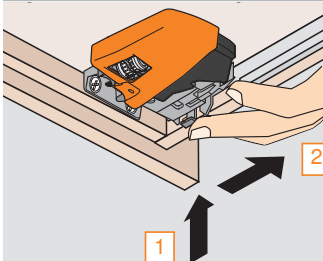
page 32

New depth adjustment on runner

TANDEM 563 and 569 runners
feature elongated holes that allow
 ± 4.5 (3/16") depth adjustment



Height adjustment



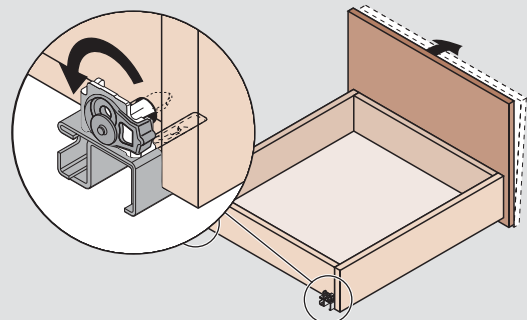
- 1** Press up on adjustment tab
2 Push towards back of drawer

Maximum 3 (1/8") rise of drawer front (tool-free)

NOTE: Height adjustment available on all TANDEM locking devices

Tilt adjustment

Rotate the tilt adjustment lever on the rear of each runner to tilt the top of the drawer front forward



Maximum 5 (3/16") rise of drawer back (tool-free)